



Harrow

Unitary Authority

This profile was published on 6 September 2016

Health Profile 2016

Health in summary

The health of people in Harrow is generally better than the England average. About 15% (7,000) of children live in low income families. Life expectancy for both men and women is higher than the England average.

Health inequalities

Life expectancy is 6.1 years lower for men and 5.6 years lower for women in the most deprived areas of Harrow than in the least deprived areas.

Child health

In Year 6, 21.2% (511) of children are classified as obese, worse than the average for England. The rate of alcohol-specific hospital stays among those under 18 was 16.1*, better than the average for England. This represents 9 stays per year. Levels of teenage pregnancy, GCSE attainment, breastfeeding initiation and smoking at time of delivery are better than the England average.

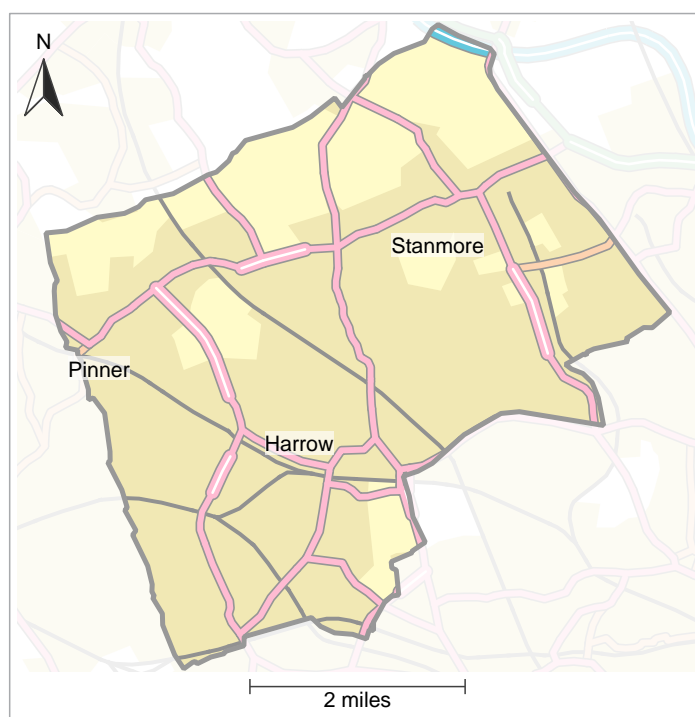
Adult health

The rate of alcohol-related harm hospital stays is 473*, better than the average for England. This represents 1,055 stays per year. The rate of self-harm hospital stays is 71.4*, better than the average for England. This represents 177 stays per year. The rate of smoking related deaths is 185*, better than the average for England. This represents 211 deaths per year. Estimated levels of adult excess weight and smoking are better than the England average. The rate of TB is worse than average. Rates of hip fractures and people killed and seriously injured on roads are better than average. Rates of statutory homelessness, violent crime, long term unemployment and early deaths from cancer are better than average.

Local priorities

Priorities in Harrow include mental health and wellbeing, obesity in children and adults, oral health in children and TB. For more information see www.harrow.gov.uk

* rate per 100,000 population



Contains OS data © Crown copyright and database rights 2016

Population: 246,000

Mid-2014 population estimate. Source: Office for National Statistics.

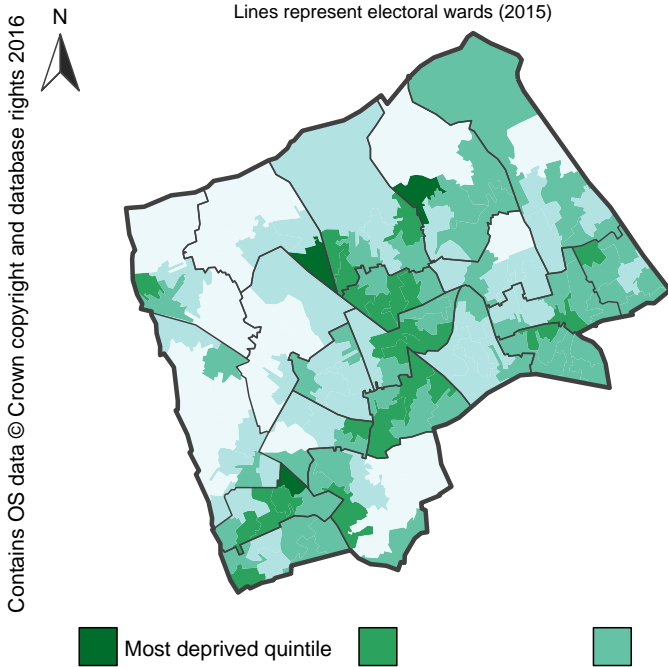
This profile gives a picture of people's health in Harrow. It is designed to help local government and health services understand their community's needs, so that they can work together to improve people's health and reduce health inequalities.

Visit www.healthprofiles.info for more profiles, more information and interactive maps and tools.

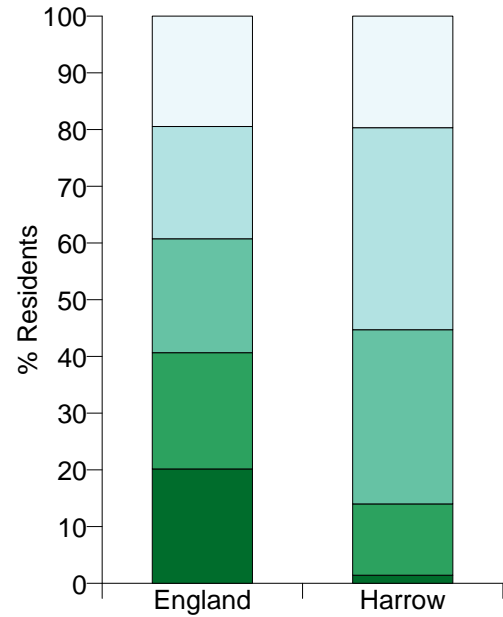
Follow [@PHE_uk](https://twitter.com/PHE_uk) on Twitter

Deprivation: a national view

The map shows differences in deprivation in this area based on national comparisons, using quintiles (fifths) of the Index of Multiple Deprivation 2015 (IMD2015), shown by lower super output area. The darkest coloured areas are some of the most deprived neighbourhoods in England.



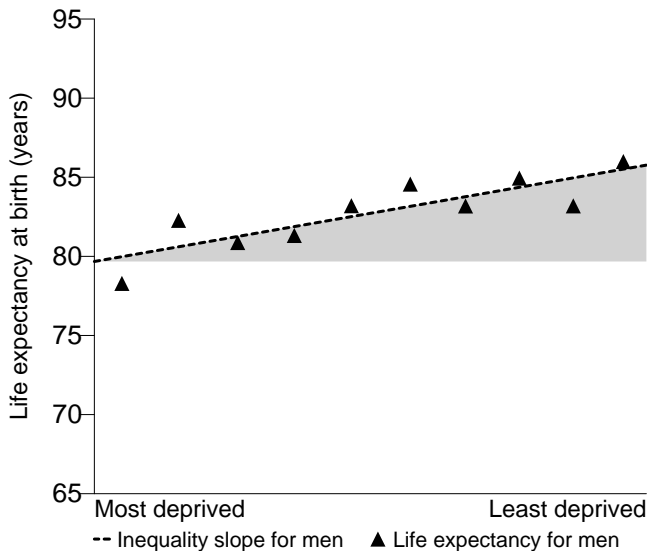
This chart shows the percentage of the population who live in areas at each level of deprivation.



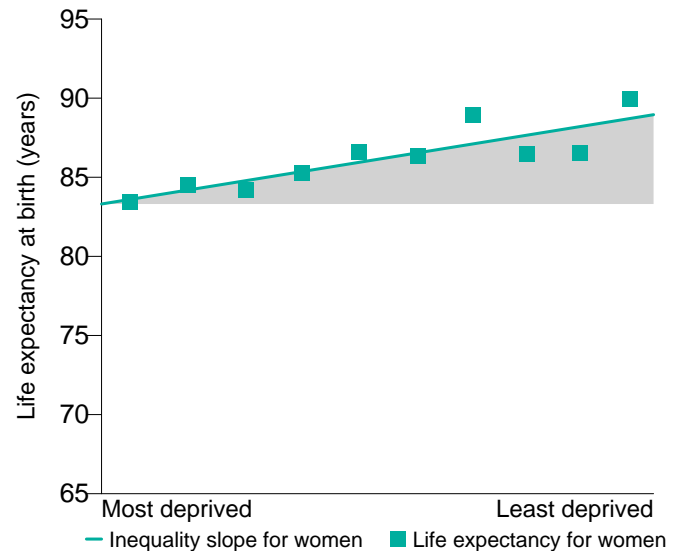
Life expectancy: inequalities in this local authority

The charts below show life expectancy for men and women in this local authority for 2012-2014. Each chart is divided into deciles (tenths) by deprivation (IMD2010), from the most deprived decile on the left of the chart to the least deprived decile on the right. The steepness of the slope represents the inequality in life expectancy that is related to deprivation in this local area. If there was no inequality in life expectancy as a result of deprivation, the line would be horizontal.

Life expectancy gap for men: 6.1 years



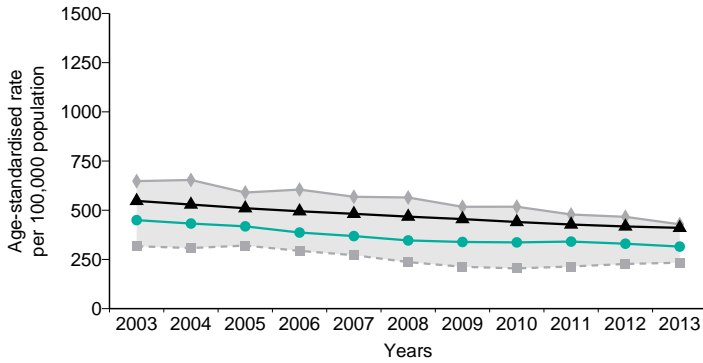
Life expectancy gap for women: 5.6 years



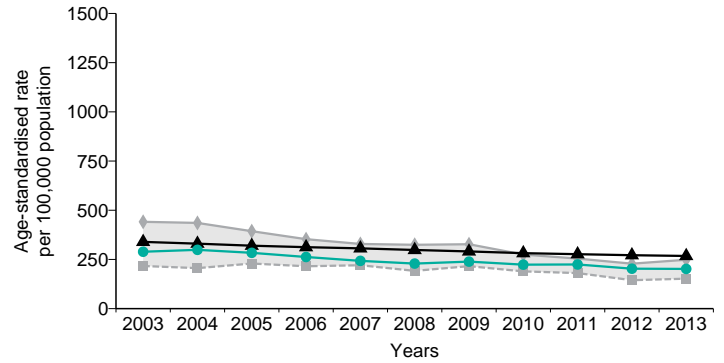
Health inequalities: changes over time

These charts provide a comparison of the changes in early death rates (in people under 75) between this area and all of England. Early deaths from all causes also show the differences between the most and least deprived quintile (IMD2010) in this area. (Data points are the midpoints of 3 year averages of annual rates, for example 2005 represents the period 2004 to 2006).

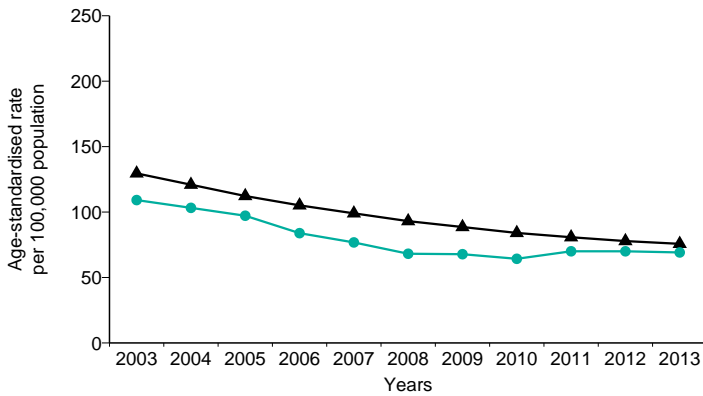
Early deaths from all causes:
MEN



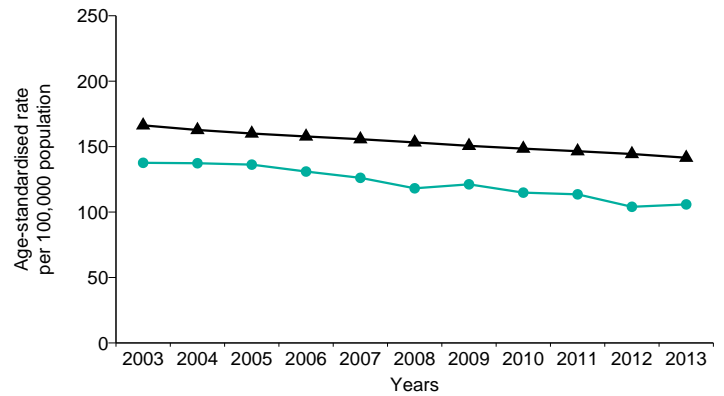
Early deaths from all causes:
WOMEN



Early deaths from heart disease and stroke



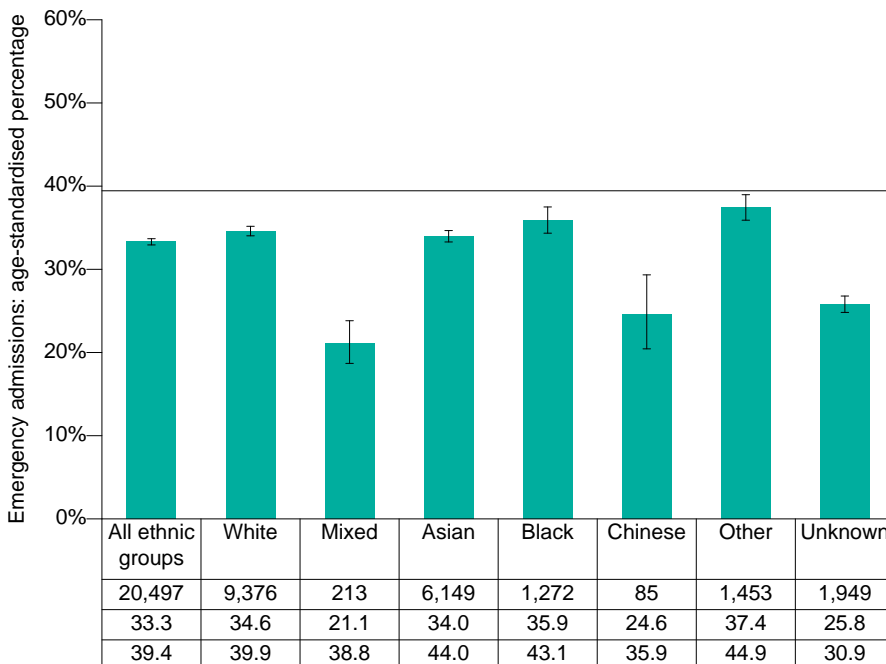
Early deaths from cancer



▲ England average ● Local average ▬ Local least deprived ◆ Local most deprived ■ Local inequality

Health inequalities: ethnicity

Percentage of hospital admissions that were emergencies, by ethnic group, 2014/15



This chart shows the percentage of hospital admissions for each ethnic group that were emergencies, rather than planned. A higher percentage of emergency admissions may be caused by higher levels of urgent need for hospital services or lower use of services in the community. Comparing percentages for each ethnic group may help identify inequalities.

■ Harrow
 | 95% confidence interval
 — England average (all ethnic groups)

Figures based on small numbers of admissions have been suppressed to avoid any potential disclosure of information about individuals.

Health summary for Harrow

The chart below shows how the health of people in this area compares with the rest of England. This area's result for each indicator is shown as a circle. The average rate for England is shown by the black line, which is always at the centre of the chart. The range of results for all local areas in England is shown as a grey bar. A red circle means that this area is significantly worse than England for that indicator; however, a green circle may still indicate an important public health problem.

- Significantly worse than England average
- Not significantly different from England average
- Significantly better than England average
- Not compared

Domain	Indicator	Period	Local No total count	Local value	Eng value	Eng worst	England Range		Eng best
							England worst	England best	
Our communities	1 Deprivation score (IMD 2015) #	2015	n/a	14.3	21.8	42.0			5.0
	2 Children in low income families (under 16s)	2013	7,040	14.7	18.6	34.4			5.9
	3 Statutory homelessness†	2014/15	28	0.3	0.9	7.5			0.1
	4 GCSEs achieved†	2014/15	1,588	65.3	57.3	41.5			76.4
	5 Violent crime (violence offences)	2014/15	3,163	13.0	13.5	31.7			3.4
Children's and young people's health	6 Long term unemployment	2015	411	2.6	4.6	15.7			0.5
	7 Smoking status at time of delivery	2014/15	144	4.7	11.4	27.2			2.1
	8 Breastfeeding initiation	2014/15	2,690	88.7	74.3	47.2			92.9
	9 Obese children (Year 6)	2014/15	511	21.2	19.1	27.8			9.2
	10 Alcohol-specific hospital stays (under 18)	2012/13 - 14/15	27	16.1	36.6	104.4			10.2
Adults' health and lifestyle	11 Under 18 conceptions	2014	47	11.0	22.8	43.0			5.2
	12 Smoking prevalence in adults†	2015	n/a	13.2	16.9	32.3			7.5
	13 Percentage of physically active adults	2015	n/a	55.0	57.0	44.8			69.8
	14 Excess weight in adults	2012 - 14	n/a	60.0	64.6	74.8			46.0
	15 Cancer diagnosed at early stage #	2014	370	50.1	50.7	36.3			67.2
Disease and poor health	16 Hospital stays for self-harm	2014/15	177	71.4	191.4	629.9			58.9
	17 Hospital stays for alcohol-related harm	2014/15	1,055	473	641	1223			374
	18 Recorded diabetes	2014/15	16,927	8.8	6.4	9.2			3.3
	19 Incidence of TB	2012 - 14	442	60.4	13.5	100.0			0.0
	20 New sexually transmitted infections (STI)	2015	1,266	780	815	3263			191
Life expectancy and causes of death	21 Hip fractures in people aged 65 and over	2014/15	174	441	571	745			361
	22 Life expectancy at birth (Male)	2012 - 14	n/a	82.7	79.5	74.7			83.3
	23 Life expectancy at birth (Female)	2012 - 14	n/a	86.1	83.2	79.8			86.7
	24 Infant mortality†	2012 - 14	45	4.2	4.0	7.2			0.6
	25 Killed and seriously injured on roads	2012 - 14	135	18.5	39.3	119.4			9.9
	26 Suicide rate†	2012 - 14	33	5.1	10.0				
	27 Deaths from drug misuse #	2012 - 14	12	x ²	3.4				
	28 Smoking related deaths	2012 - 14	634	184.9	274.8	458.1			152.9
	29 Under 75 mortality rate: cardiovascular	2012 - 14	358	69.1	75.7	135.0			39.3
	30 Under 75 mortality rate: cancer	2012 - 14	558	105.8	141.5	195.6			102.9
	31 Excess winter deaths	Aug 2011 - Jul 2014	191	13.9	15.6	31.0			2.3

Indicator notes

1 Index of Multiple Deprivation (IMD) 2015 2 % children (under 16) in low income families 3 Eligible homeless people not in priority need, crude rate per 1,000 households 4 5 A*-C including English & Maths, % pupils at end of key stage 4 resident in local authority 5 Recorded violence against the person crimes, crude rate per 1,000 population 6 Crude rate per 1,000 population aged 16-64 7 % of women who smoke at time of delivery 8 % of all mothers who breastfed their babies in the first 48hrs after delivery 9 % school children in Year 6 (age 10-11) 10 Persons under 18 admitted to hospital due to alcohol-specific conditions, crude rate per 100,000 population 11 Under-18 conception rate per 1,000 females aged 15-17 (crude rate) 12 Current smokers, Annual Population Survey (APS) 13 % adults achieving at least 150 mins physical activity per week 14 % adults classified as overweight or obese, Active People Survey 15 Experimental statistics - % of cancers diagnosed at stage 1 or 2 16 Directly age sex standardised rate per 100,000 population 17 The number of admissions involving an alcohol-related primary diagnosis or an alcohol-related external cause (narrow definition), directly age standardised rate per 100,000 population 18 % people on GP registers with a recorded diagnosis of diabetes 19 Crude rate per 100,000 population 20 All new diagnoses (excluding Chlamydia under age 25), crude rate per 100,000 population 21 Directly age and sex standardised rate of emergency admissions, per 100,000 population aged 65 and over 22, 23 The average number of years a person would expect to live based on contemporary mortality rates 24 Rate of deaths in infants aged <1 year per 1,000 live births 25 Rate per 100,000 population 26 Directly age standardised mortality rate from suicide and injury of undetermined intent per 100,000 population (aged 10+) 27 Directly age standardised rate per 100,000 population 28 Directly age standardised rate per 100,000 population aged 35 and over 29 Directly age standardised rate per 100,000 population aged under 75 30 Directly age standardised rate per 100,000 population aged under 75 31 Ratio of excess winter deaths (observed winter deaths minus expected deaths based on non-winter deaths) to average non-winter deaths (three years)

† Indicator has had methodological changes so is not directly comparable with previously released values.

€ "Regional" refers to the former government regions.

New indicator for Health Profiles 2016. x² Value cannot be calculated as number of cases is too small

More information is available at www.healthprofiles.info and <http://fingertips.phe.org.uk/profile/health-profiles>

Please send any enquiries to healthprofiles@phe.gov.uk

You may re-use this information (not including logos) free of charge in any format or medium, under the terms of the Open Government Licence. To view this licence, visit www.nationalarchives.gov.uk/doc/open-government-licence/version/3/